



**There's something
fresh in the air.**

**INDOOR AIR QUALITY:
new challenge,
new business,
explore the new
Somfy® air program.**

Every day of our life is enriched by the ever-changing rhythm of our many activities...



which leave visible and invisible traces...



Breathe

An adult takes an average of **26,000 breaths, some 15,000 litres of air every day.** The air we breath out is loaded with moisture.



Wash

Washing, taking showers each day... This means 10 to 20 litres of water evaporating every day in our homes. **This moisture can lead to fungal growth,** which is potentially toxic and smelly.



Cook

Evaporation, grease-loaded fumes, carbon monoxide from combustion, **cooking is a polluting activity in the home.**



Clean

Cleaning products can also **affect indoor air quality.** Most of them contain allergenic, irritant chemicals, which can even be corrosive and hazardous to our health and the environment.



Perfume

Deodorants, perfumed candles, incense and synthetic perfumes disperse VOCs (Volatile organic compounds) adding to the pollution of the ambient air.



Pet

Our animal friends are naturally carriers of allergens and mites, responsible for many pulmonary allergies.



Air indoors is:
2 to 8 times more
polluted than air
outside*

*Source: Agence de Protection
de l'Environnement (Sept. 2013)

**A real challenge
to health
and well-being.**



Airing your
living space every day,
is essential
for your health!



DID YOU KNOW?

To keep your home healthy,
the WHO recommends

- airing the entire dwelling
- 10 minutes
- twice a day

Although...
there are some serious concerns

Fear of intrusion

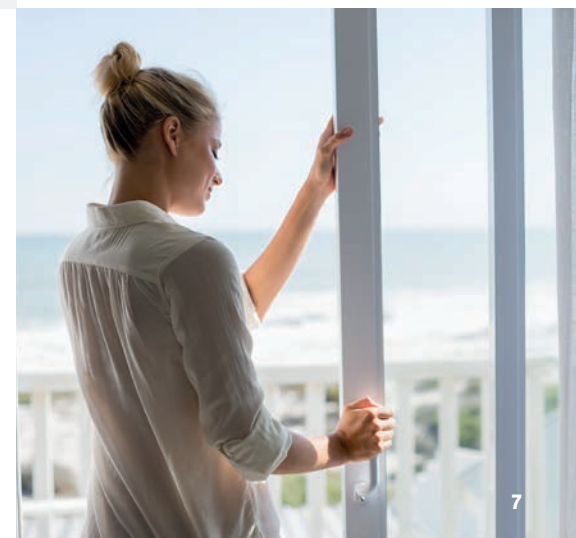
*"I'm afraid of leaving
my window open
for airing when I am
out."*

Energy loss

*"If I open the windows
twice a day in winter,
I'm warming the birds..."*

Lack of time

*"5 minutes to open
everything, leave it
for fifteen minutes,
then go back and close
everything up... I don't
have the time!"*





With the Somfy air program, Somfy has taken on society's new sustainability challenges, providing real added value for the window market.

Together, we can be drivers of this growth!



STAKE 1: The smart window market

Everything is at stake for the next 5 years!

In the next 5 to 10 years, a whole generation of purchasers, born with a smartphone, will be looking to own...connected homes!

When it comes to connected, automated windows, the market is going to develop in the very short-term, to deal with the challenges associated with air quality in general.

As tomorrow begins today, we are supporting our professional partners to respond to these new market expectations, from now on.



STAKE 2: A common core business

For 50 years, from the first motor for a rolling shutter, signalling the demise of the handle, to the connected home, **Somfy offers support and help in everyday life for millions of users** throughout the world. Day by day, Somfy, together with building sector professionals, conceives and creates a more comfortable, safer and more responsible habitat.

Somfy is now making the natural move to the smart window, with innovations offering window professionals efficient, long-lasting solutions. **Let's innovate together, with the Somfy air program,** giving the window new functionalities, to address new uses and lifestyles.



STAKE 3: Guaranteed air quality for everyone

We are from a generation which spends **80 to 90% of its time indoors**, where pollution can reach thresholds up to 8 times higher than outside. With its Somfy air program, the brand is offering concrete solutions for everyone to improve their Indoor Air Quality (IAQ).



Get ahead of 2020 air regulations and be prepared on your market

Beginning by adding Somfy air solutions to your worksites/client projects from today, **you can get ahead of the regulations coming into effect on 1 January 2020** (RE 2020). For both renovation projects and for marketing new program, you can leap ahead... **And it's a real business opportunity!**

The Somfy® air program

A range of concrete solutions to help people improve their indoor air quality.



Somfy is offering secured, automatic airing.

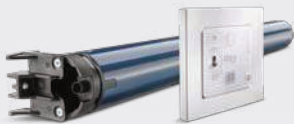
From the simplest to the most connected, the Somfy air program has been designed to meet your customers' needs, whatever type of equipment they have in their home. Every solution is stand-alone or can be combined.

Airing with peace of mind



IntelliTAG air io sensor
Anti-intrusion sensor
(works with TaHoma)

Easy airing



Sliding air io motor
and its easy to use control

Every day airing, without having to think about it



TaHoma,
a complete eco-system around the window



Airing with peace of mind

IntelliTAG air io sensor

Works with TaHoma

Airing is vital, as long as only fresh air enters your home! Thanks to the IntelliTAG air io sensor, **inhabitants who air their home themselves can have peace of mind.**



IntelliTAG air io
Anti-intrusion sensor
built into the window

SENSOR

FUNCTIONALITIES:

- **Remote checking of the window status:** open, locked, tilt-and-turn.

EXCLUSIVE TO SOMFY

- **Anti-intruder detection** with a built-in accelerometer: able to give a warning if there is a real attempted break-in.



For professionals: Your competitive advantages

- **Aesthetic:** sensor built into frame.
- **Universal:** wide compatibility with various types of frames and materials (turn, tilt-and-turn, sliding, PVC, aluminium and wood).
- **Simple:** intergration and setting made easier in the production flow.
- **Setting parameters, customisation and traceability** guaranteed with a suitable industrial tool.
- **Added value:** offering **technology accessible to all.**

“When at work, with my TaHoma app, I get a notification on my phone in case of a break-in attempt at home.”

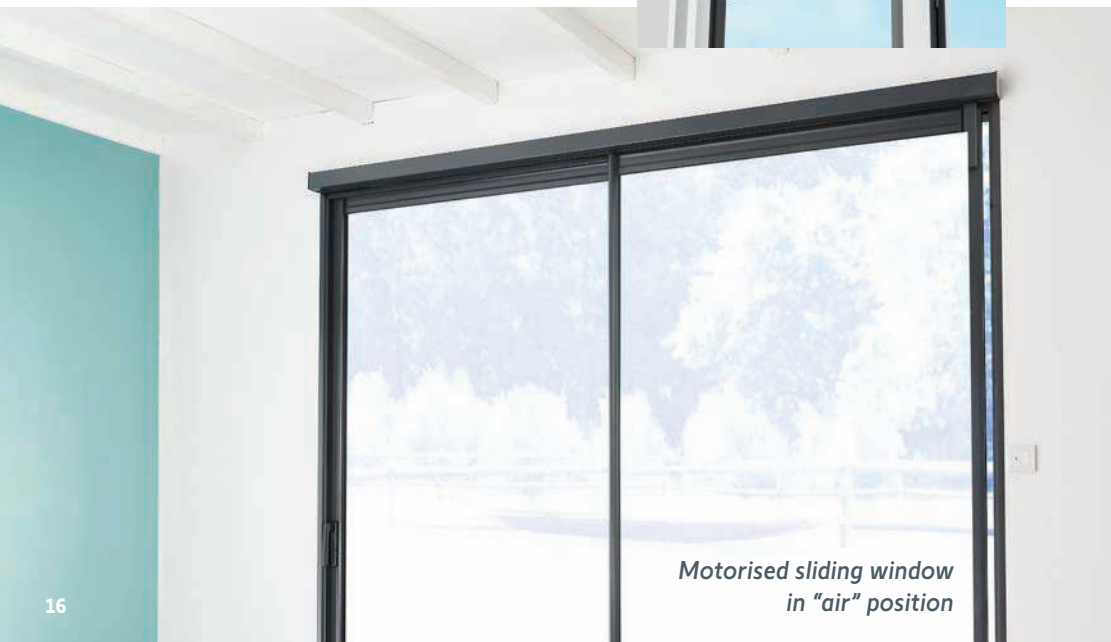
“I left home in a hurry this morning, I can check on my phone any time if I closed the window properly.”

Easy airing

Sliding air io motorisation solution

Opening and closing sliding bay windows is effortless, with gentle movements, thanks to the Sliding air io motor, which allows smooth closure.

This technology, thoroughly tested on roller shutters, provides optimal acoustic comfort. A local control point is provided. For completely secured airing, the motorised sliding window also has the "air" position: the window opens just a few centimetres, and locks in position to prevent any intrusion.



Motorised sliding window in "air" position



Sliding air io motor & Smooove window air io for sliding windows and bays

Smooove window air io

- Open / Close.
- "air" position: the window opens a few centimetres, and locks for safety reasons.
- "My" function: favourite open position.

“ Since we have motorised our sliding window, we can operate it easily. Just one click on the control opens or closes it. ”

“ In the morning, with one click on the window switch my window opens a few centimeters in the "air" position. Such peace of mind, to know I'm airing the living room, with no risk of an intrusion. ”

FIND OUT **MORE**



Control/sensor air io

- Identical functions to Smooove window air io (Open, close, "My" function and "air" position)

+

- Automatic closing with a built-in temperature and humidity sensor



For professionals: Your competitive advantages

- Built-in, discreet.
- Soft close, smooth stopping to ensure optimum acoustic comfort and extend the lifespan of the sliding window.
- An all-in-one, ready to fit product.
- Simple electrical connection and settings.
- Obstacle detection.
- Manual opening and closing available in the event of a power failure.

Every day airing, without having to think about it

TaHoma a complete eco-system around the window

The TaHoma home control box centralises all motorised windows with the other home equipment (rolling shutters, skylights, alarms, heating, etc.). The sliding bays and windows are now joining the world of the connected home, and can be controlled either from the smartphone or by voice!



*“ With complete peace of mind
I can program the daily opening and
closing of all my windows for 10mins. ”*

*“ If my window has been left open,
I can close my rolling shutter remotely.
The shutter stops a few centimetres and
locks...so my room can be safely aired. ”*

**Control of motor for roller shutter
RS100 air io via TaHoma in 2021.**

*“ To avoid energy loss, I can program
the heating to turn off at the same time
as the sliding window opens. ”*

*“ I can connect my intelliTAG air io sensor
to an alarm system to deter intrusion
attempts when I air. ”*

FROM THE TAHOMA APP

- **Controlling windows:** opening, closing, "air" position.
- **Real time display of window status** (open / closed) .
- **Creation of automatic scenarios.**
- **Compatible with:**
 - Voice assistants (Google, etc.).
 - Roof window, tilt-and-turn window partners.



For professionals: Your competitive advantages

TaHoma, an evolutive open program

The Somfy air programme completes the TaHoma eco-system with an absolutely vital function: monitoring the quality of the air we breathe.

So Open with Somfy

The So Open program allows many users to combine their Somfy products with those of other players in the connected home market, to enhance their experience and widen the field of possibilities.



Together, we are adding air quality to your package, with the **Somfy air program.**



Let us be partners for the future, for a **healthy, sustainable home.**

Add value for your customers by offering them Somfy "air" program solutions:

- **Air with peace of mind:**
thanks to the anti-intruder sensor.
- **Easy airing:**
with the motor drive and its local, dedicated controller.
- **Everyday airing without having to think about it:**
thanks to the TaHoma eco-system.



Minimum investment for profitable innovation.

Somfy supports you.



Support for integration

Fitting plans offered, with **the method of fixing suitable for your window frame ranges** and your industrial flows.

EMS2 for window professionals:

- configuration,
- customisation
- and traceability.



Support for installation

With fitting identical to that of a conventional window, and support for the electrical connections, **installation is quick and easy.**



Diagnostics & maintenance

Traceability of data makes diagnostics easier and in future, new added value services are coming (preventive maintenance, repairs, etc.).

About Somfy

Somfy's leading smart management solutions for homes and buildings have been improving people's daily lives for over 50 years. Developed with comfort, ease of use, security and sustainability in mind, our innovations automate and connect rolling shutters, curtains and blinds, gates and garage doors, lighting and heating, alarms systems and more. We are committed to creating useful solutions that are accessible to all, designed for today and beyond.

Somfy Activités SA

50 avenue du Nouveau Monde
BP 152 - 74307 Cluses Cedex
France

T +33 (0)4 50 96 70 00

F +33 (0)4 50 96 71 89

www.somfy.com

A BRAND OF **SOMFY** GROUP

somfy®